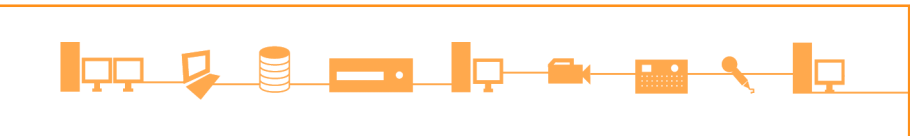




THE FREEDOM TO CREATE WHEREVER YOU ARE



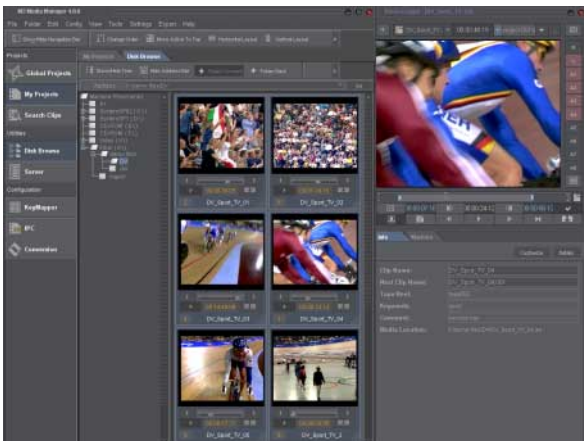
INCITE REMOTE PRODUCER RP

Real-time DV Freedom for Independents



Incite Remote Producer RP is Incite's full-featured NLE DV editor offering you real-time power, background rendering/encoding, a professional audio suite and the most praised interface in the broadcast industry. You have the freedom to capture, edit and produce virtually anywhere on a laptop or standard PC, with the next generation DV editing technology in your hands.

Designed for the professional craft editor, Incite Remote Producer RP delivers a complete range of real-time editing tools over two streams of video and one graphics/titles layer with alpha channel. Everything you need to post-produce your videos is in real-time: transitions, titles, speed change effects, and audio mixing. If you need to add more power and effects to your videos, Incite Remote Producer RP offers you unlimited compositing effects with background rendering (including bundled Boris FX or optional Boris Red plug-ins) and integration with 3rd party compositing tools like Adobe After Effects.



Incite Remote Producer RP requires no additional dedicated hardware and takes advantage of today's fast processor technology, offering multi-threaded architecture for more real-time editing and effects power, as well as automated background rendering and background encoding to DVD using built in Incite Task Server technology.

Top Features for Incite Remote Producer RP

- ➔ Hardware-independent (requires no dedicated hardware)
- ➔ Real-time transitions and effects over 2 video layers and 1 graphic layer.
- ➔ Real-time titles with alpha channel
- ➔ Real-time transitions (Dissolves, fades and crossfades)
- ➔ Real-time speed change
- ➔ Boris FX bundled
- ➔ Rendered transition effects with Boris FX
- ➔ Background rendering for compositing effects
- ➔ Clip/media consolidation
- ➔ Export to After Effects
- ➔ Timeline export to MPEG2
- ➔ Transcode to WAV: CDA, MP3 and WMA
- ➔ Support for Sony DSR-DU1

Edit during DV Acquisition

Real-time Transitions & Titles

Background rendering

Boris FX bundled

MPEG2 Transcoding for DVD



Remote Producer

Editing Features

- Edit native, full-resolution DV
- Real-time architecture
- 1394 (Firewire) capture and print to tape
- Full project transparency with Incite Editor and all other Incite applications
- Unlimited video/audio tracks
- Advanced editing modes (TV mode, Film mode, Get Trim mode, Overlap mode)
- Supported Editing Ratios: 4:3, 16:9
- 3-point and 4-point editing
- Fill the gap and fit to fill capabilities
- Batch capturing
- Advanced Trim editing features
- Out of sync display for clips on timeline
- Dynamic timeline thumbnails and resizable layers
- Customizable clip info and metadata display (speed, duration, markers, etc.)
- Create Clips and Consolidate Clips from timeline
- Timeline export for DVD authoring with background encoding
- Variable speed Jog/Shuttle modes
- Group and ungroup
- Unlimited Undo/redo
- Insert and edit markers at the clip and timeline level
- Quick one-key creation of transitions on the timeline
- Fully customizable keyboard, with Keymapper application
- Customizable Autosave and Backup features
- All formats EDL export/import
- Support for Sony DSR-DU1 video disk

Video Effects

- Real-time transitions
- Real-time advanced color correction
- Real-time titles
- Real-time speed change effects
- 2 real-time video layers and 1 real-time 32 bit graphics layer
- Professional Effects: picture-in-picture, blur, 2D, and multi-layer compositing.
- Background local rendering with exclusive Incite Task Server automation for batch rendering
- Export from timeline with background encoding (DV/MPEG2) using Task Server management
- Multiple, customizable FX libraries with ready to use effects
- Advanced keyframing for all effects
- Apply and save multiple effects on a single clip
- Interpolated Speed Change filter for perfect slow motion
- Advanced integration with compositing software like Discreet Combustion, Adobe After Effects, 3D Studio MAX
- Boris FX bundled for sophisticated multi-layer rendered effects
- Timeline export to Adobe After Effects
- Optional 3rd party plug-ins support (Film FX, Ultimatte, Boris Red and others)
- Full support for dual processor systems for multi-threaded, faster, and more efficient rendering

Graphics and Titling

- Real-time uncompressed graphics and titles with alpha channel
- Inscribe Title Express bundled CG editor
- Customizable CG templates
- Graphic format support: TGA, ICG, BMP, TIFF and JPEG
- Real-time timeline update for saved changes to TGA files in Photoshop
- Optional software-based 3D Titling, animation and effects
- Create graphics from video using Grab Frame or Grab Field

Audio Features

- Professional top-of-the-line audio features and effects
- Unlimited audio tracks
- 8 audio tracks in real-time*
- Sampling Rate: 32, 44.1, 48 kHz
- Audio Quality: 8,16,24,32-bit
- Real-time volume levels and timeline keyframing
- Real-time waveform display
- Professional Audio FX and keyframing: Delay, parametric EQ, flanger, tone, dynamics and more
- Optional FX Plug-ins: Reverb, denoiser, descatcher, time compression and advanced limiter
- Voice-over recording on the timeline with punch-in features
- Real-time audio FX and advanced Audio FX rendering
- Audio OMF 2.2 export/import
- Professional, customizable VU and peak meters
- Customizable mixer configurations per timeline
- Mixer configurations can be saved and exchanged between Incite applications
- Analogue and digital scrubbing

*May depend on system configuration and audio effects applied

Media Management

- Incite Media Manager M2 included (local disk browsing and clip logging)
- Advanced management of local media and FX libraries using Media Manager M2 technology
- Multi-codec browsing and viewing of clips in M2 (including QuickTime, Windows Media, Real, DivX, MP3, CDA and more)
- Preview and browsing of clips in table and small player views in M2
- Search and sort functions of locally stored media, clips and assets
- Customizable metadata at the clip level; includes markers, marker groups, and scripting tools
- Dynamic database architecture: Remote Producer projects are transparent with Incite Editor and other Incite on-line applications
- Advanced Project configuration tools for local management of projects and project assets
- EDL import/export (including CMX, Sony, GVG and others)
- History of Autosave and Backup project files for fast reference and loading
- Background rendering and MPEG2 encoding features with Incite Task Server automation technology

System Requirements

Operating System: Windows XP Professional (with SP 1a or 2)

Processor: Minimum - P4 2.4 GHz / Recommended - 3.2 GHz (or above) with hyperthreading Support for single and dual processor systems; Multi-threaded architecture support takes full advantage of today's CPU's, including Hyperthreading technology when using Intel Xeon and Pentium 4 HT processors.

RAM: Minimum - 1 Gig of RAM / Recommended - 2 Gig of RAM

Ports: 1394, USB (USB2 Recommended)

Display Card: Minimum - AGP with 128MB on-board memory / Recommended - PCIe with 256MB on-board memory

Audio Card: Sound Blaster compatible

Storage Speed: Minimum - 7200rpm

Video Codec Support: Native DV for editing. DivX, QuickTime, MPEG-2 and other standard multimedia codecs for exporting.



IMC- Technologies Inc.

Chemin des Aulx, 16
1228 Plan-les-Ouates - Geneva /Switzerland
Tel. +41 (0)22 308 93 70 Fax. +41 (0)22 308 93 71

Internet

www.incite-tech.com

E-mail

info_imc@incite-tech.com